

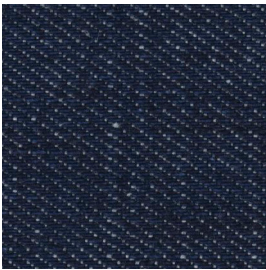
## JEANS FABRICS<sup>+</sup>

For the Assessment of Soiling and Cleaning Behavior

All three articles are based on the same fabric, but with different dyeings. These Jeans fabrics are used in the leather-, automotive-, textile- and cleaning industry to determine soiling caused by Jeans fabrics respectively to test the cleaning behaviour of such soiling. Article 278 is also available (conform with VDA test) with a carbonblack/oliveoil soiling. (article 128)

### article 277

100 % cotton



#### Pure indigoblue dyeing in warp\* direction

- m<sup>2</sup>-weight = 420 g
- threads in warp\* direction = 24.5 / cm
- threads in weft\*\* direction = 19.5 / cm
- Type of dyeing = indigoblue

### article 278

100 % cotton

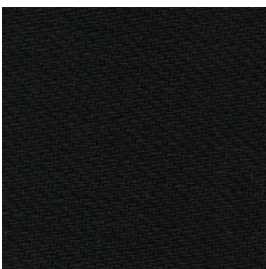


#### Indigoblue / sulfurblack dyeing in warp\* direction

- m<sup>2</sup>-weight = 420 g
- threads in warp\* direction = 24.5 / cm
- threads in weft\*\* direction = 19.5 / cm
- Type of dyeing = indigoblue/ sulfurblack

### article 279

100 % cotton



#### Sulfurblack dyeing in warp\* and weft\*\* direction

- m<sup>2</sup>-weight = 420 g
- threads in warp\* direction = 24.5 / cm
- threads in weft\*\* direction = 19.5 / cm
- Type of dyeing = sulfurblack

\* warp direction = length direction of the fabric

\*\* weft direction = width of the fabric