

PILLING FABRICS⁺

For the Assessment of Pilling in Washing and Tumble Drying Processes

Three articles are available, each in original and prepilled form.

article 250

Pilling set, original



article 251

Pilling set, prepilled

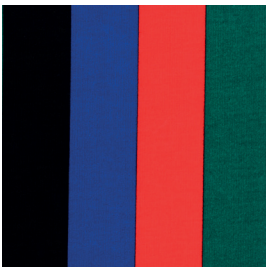


Pilling Set Containing:

- black slip, 55 % CO, 40 % CV, 5 % EL
- red T-Shirt, 95 % CO/ 5 % EL
- white V-neck shirt, 48.5 % CO, 48.5 % Meryl, 5 % EL
- 1 pair of black socks, 98 % CO, 2 % EL
- printed Jersey, 100 % CO
- pink fabric, 100 % CO

article 252

94 % CO, 6 % EL
Printed, original



article 253

94 % CO, 6 % EL
Printed, prepilled

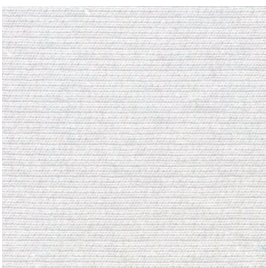


Printed Jersey

- m²-weight = ca. 240 g
- printed with pigments
- prepilled in washing machine
- basic jersey identical with article 254/255

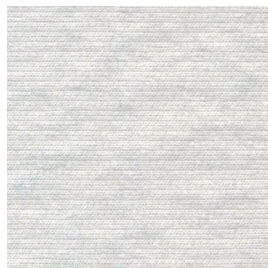
article 254

94 % CO, 6 % EL
White, original



article 255

94 % CO, 6 % EL
White, prepilled



White Jersey

- m²-weight = ca. 240 g
- prepilled in washing machine
- basic jersey identical with article 252/253