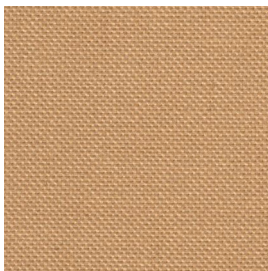


# TEA SOILING<sup>+</sup>

For the Assessment of Bleaching Systems

The test fabrics are soiled with a concentrated black tea solution. The colored ingredients of the tea are sensitive to bleaching agents. These test fabrics can be used at all washing temperatures.

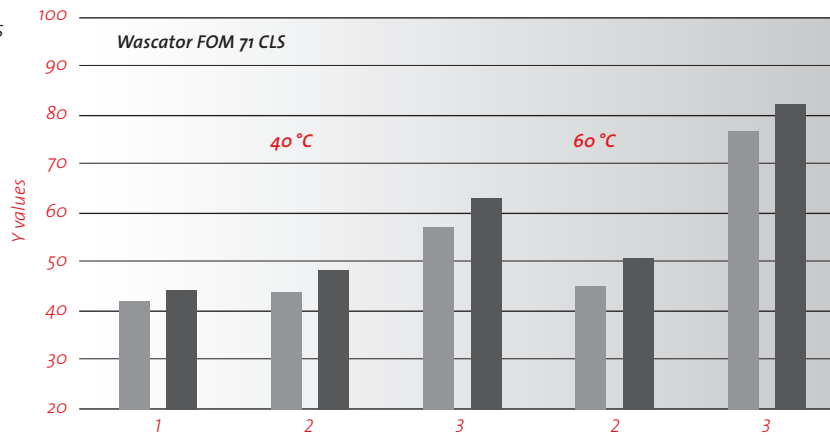
**article 167**  
soiling on cotton



**article 168**  
soiling on polyester/cotton



## Influence of bleaching agent



article 167

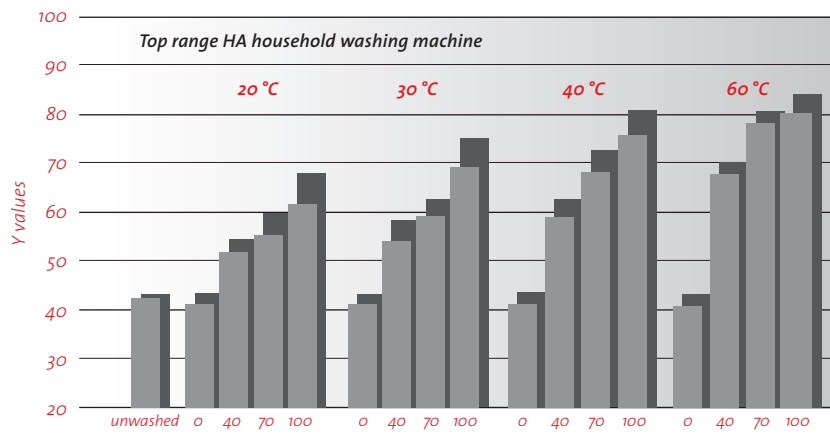
article 168

- 1 unwashed
- 2 without bleaching agent
- 3 with bleaching agent

Bleaching agent:  
1.4 g sodiumperborate + 0.21 g TAED/l  
washing liquor

washing liquor:  
5.3 g IEC A\*/l

## General washing behaviour



article 167

article 168

100% correspond to 6.9 g IEC A\*+1.8 g sodiumperborate + 0.27 g TAED/l washing liquor

% heavy duty washing powder

Article 167/168 are sensitive to bleaching agents and as a result of to the temperature and to the amount of heavy duty washing powder.