

SEBUM / PIGMENT SOILING⁺

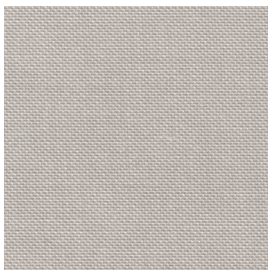
For Assessing the Efficiency of Detergents

These test fabrics are soiled with a mixture of artificially produced sebum and pigments such as soot, kaolin and iron oxide. They are useable at all washing temperatures.

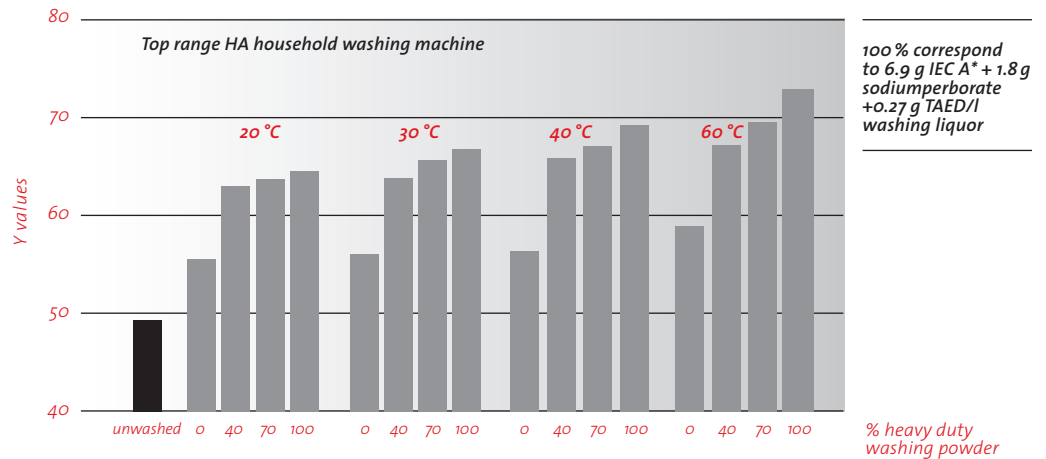
article 118 soiling on cotton



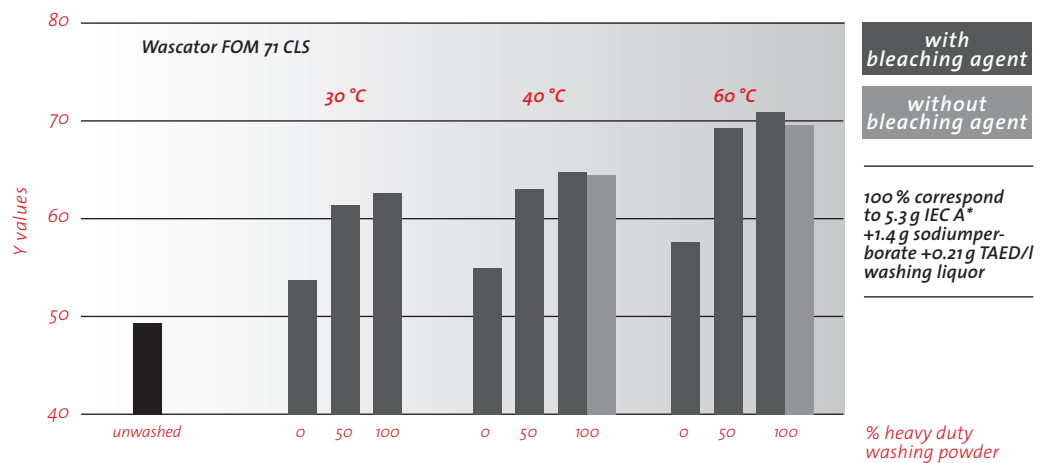
article 119 soiling on polyester/cotton



General washing behaviour (article 118)



Additional influence of bleaching agent (article 118)



Article 118 & 119 is sensitive to the amount of detergent and slightly to the temperature. It is nearly insensitive to bleaching agents and to enzymes. The characterisation of Article 119 is under consideration.