

# BLOOD / MILK / INK SOILING<sup>+</sup>

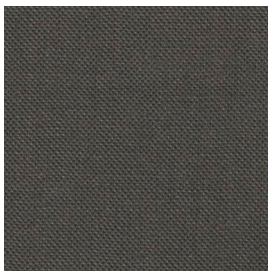
For the Assessment of Proteases

These test fabrics are soiled with a mixture of blood, milk and soot. They are useable at all washing temperatures.

**article 116**  
soiling on cotton

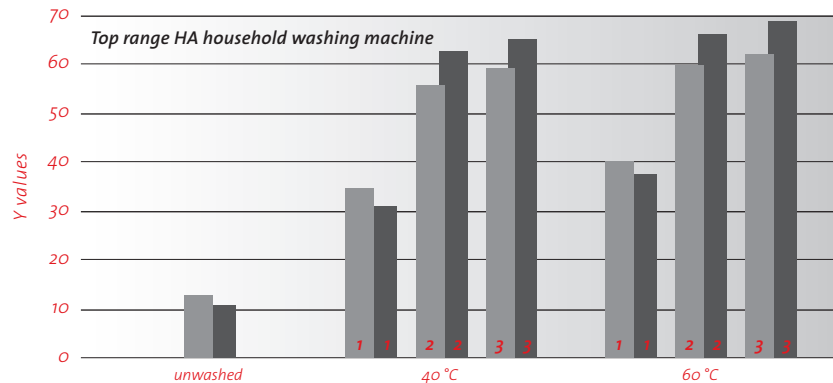


**article 117**  
soiling on polyester/cotton



Article 116/117 are sensitive to proteases, to the amount of detergent and to the temperature. Added bleaching agents may inhibit the washing performance. They are nearly insensitive to other enzymes like amylases, lipases and cellulases.

## Influence of enzymes



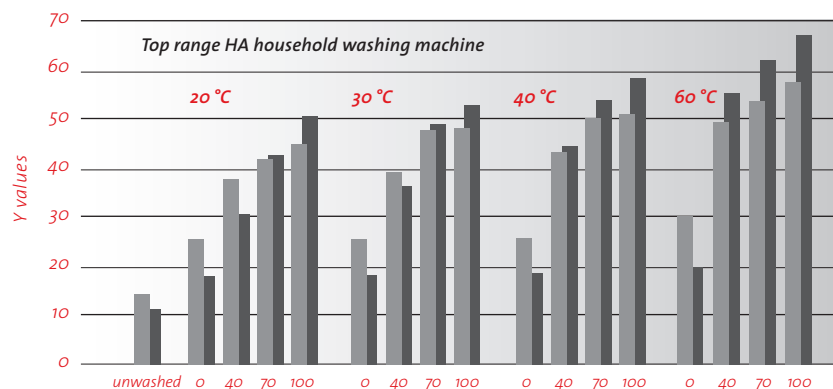
article 116

article 117

- 1 without any enzyme
- 2 0.4% protease
- 3 enzyme-mixture consists of (0.4% each): protease, amylase, lipase & cellulase

Washing liquor:  
6.9 g ECE'98/l

## General washing behaviour



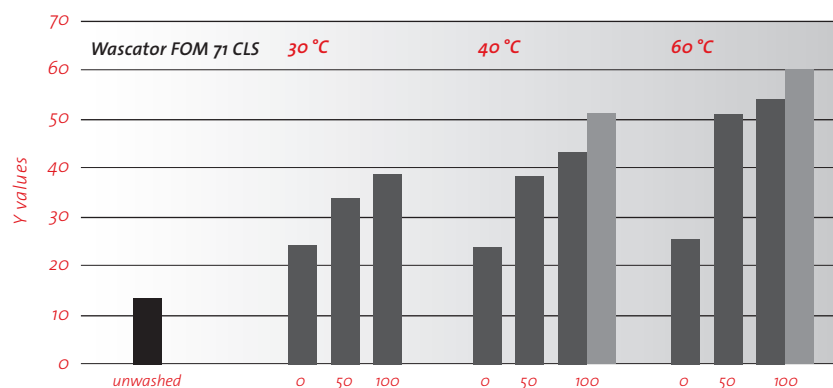
article 116

article 117

100% correspond to 6.9 g IEC A\* +1.8 g sodiumperborate +0.27 g TAED/l washing liquor

% heavy duty washing powder

## Additional influence of bleaching agent (article 116)



with bleaching agent

without bleaching agent

100% correspond to 5.3 g IEC A\* +1.4 g sodiumperborate +0.21 g TAED/l washing liquor

% heavy duty washing powder