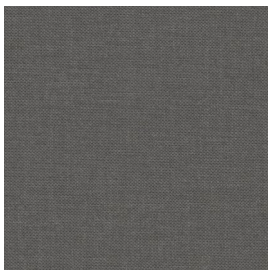


# CARBON BLACK / OLIVE OIL SOILING <sup>+</sup>

For Assessing the General Washing Behaviour

These test fabrics are soiled with a mixture of olive oil and soot. They are useable at all washing temperatures.

**article 101**  
soiling on cotton

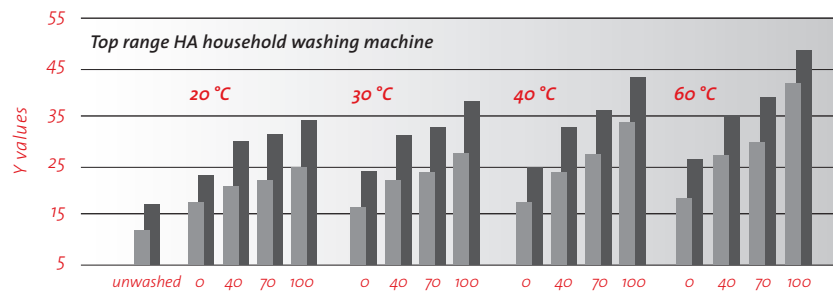


**article 104**  
soiling on polyester/cotton



Article 101/104 are sensitive to the amount of detergent and to the temperature. They are little affected by enzymes (protease, cellulase) and bleaching agents. They are nearly insensitive to other enzymes like amylases and lipases.

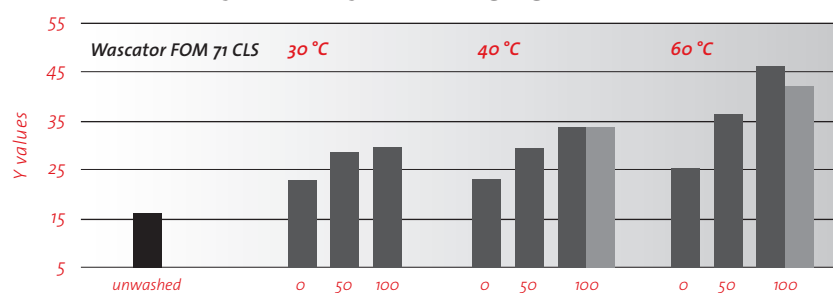
## General washing behaviour



**article 101**  
**article 104**  
100% correspond to 6.9 g IEC A\* +1.8 g sodiumperborate +0.27g TAED/l washing liquor

% heavy duty washing powder

## Additional influence of bleaching agent (article 101)

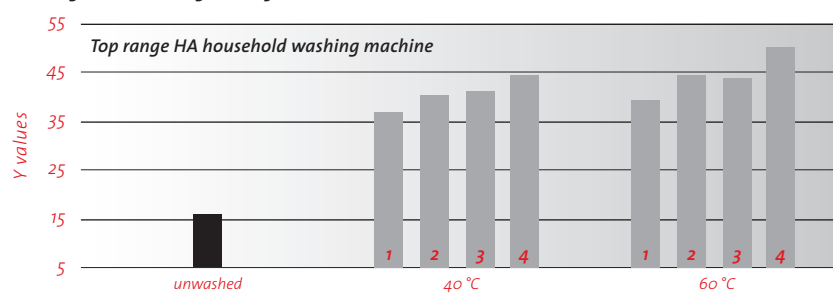


**with bleaching agent**  
**without bleaching agent**

100% correspond to 5.3 g IEC A\* +1.4 g sodiumperborate +0.21g TAED/l washing liquor

% heavy duty washing powder

## Influence of enzymes (article 101)



- 1 without any enzyme
- 2 0.4 % protease
- 3 0.4 % cellulase
- 4 enzyme-mixture consists of (0.4 % each): protease, amylase, lipase & cellulase

Washing liquor: 6.9 g ECE\*98/l

